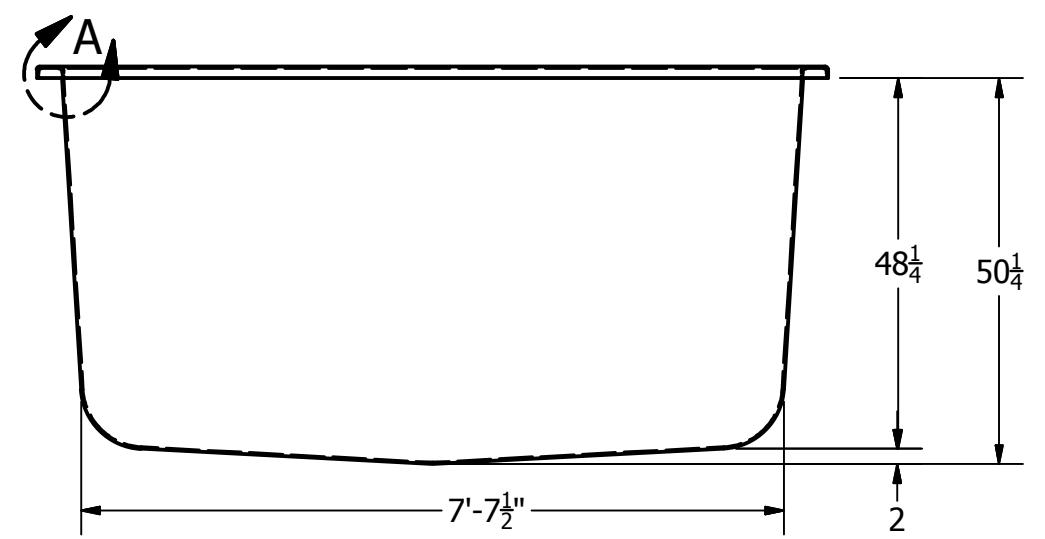
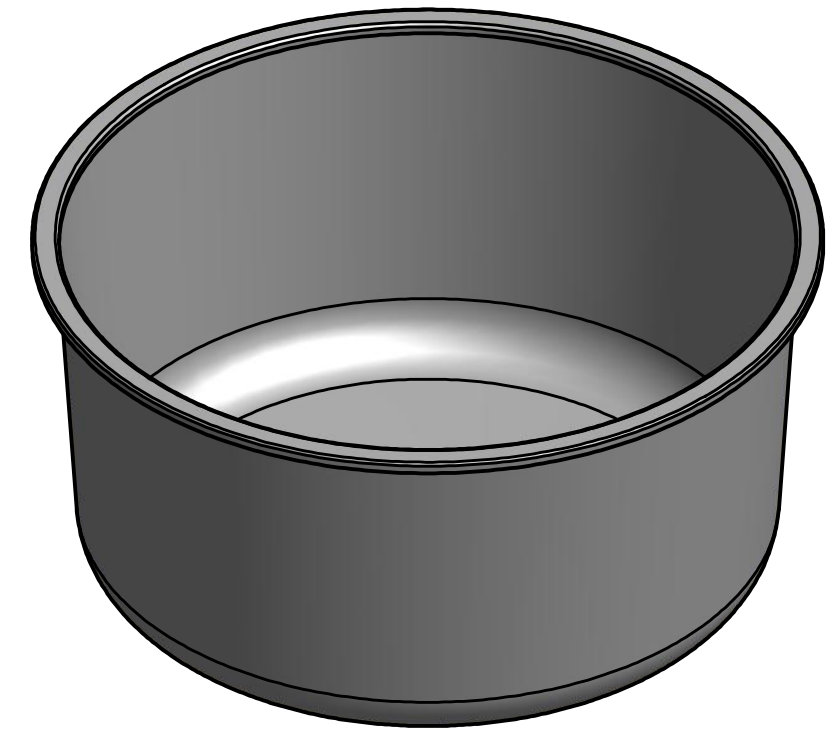
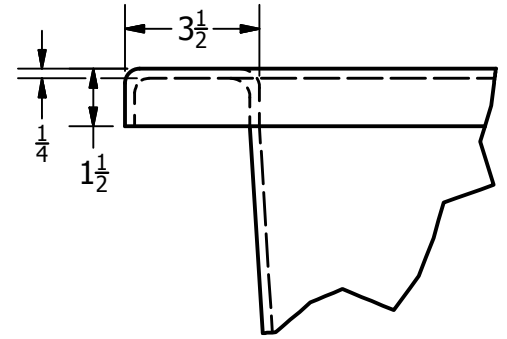
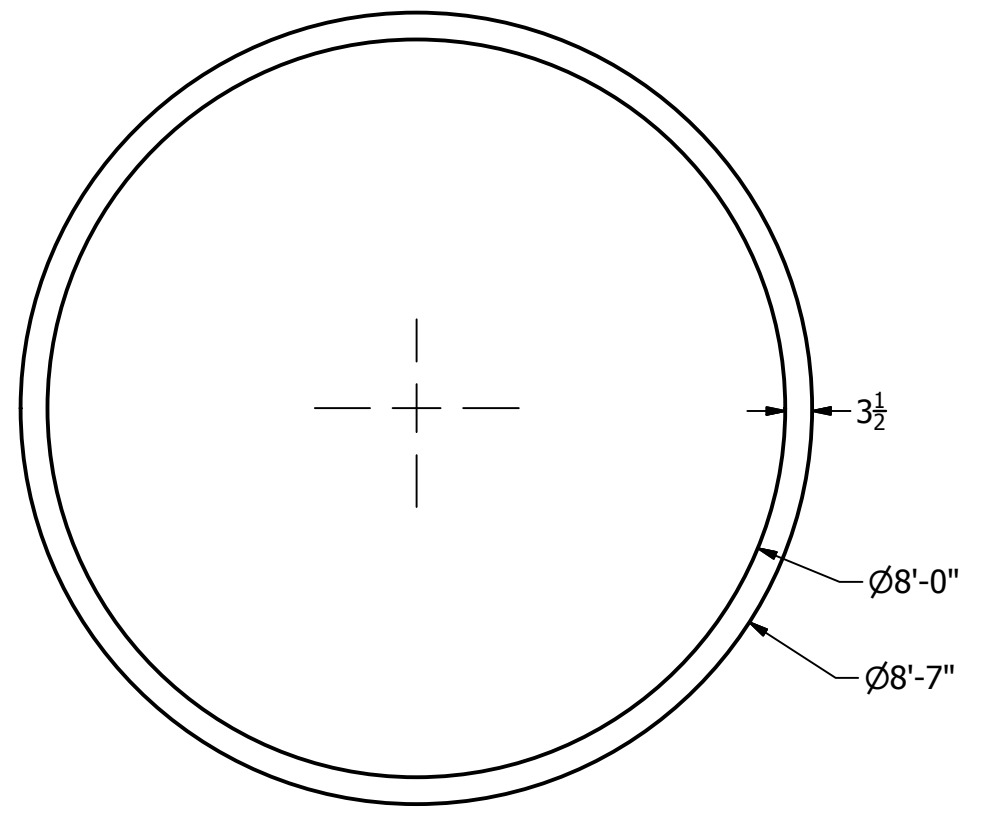



REVISION HISTORY			
REV	PART NUMBER	DESCRIPTION	DATE
00	CT 8-4	PRELIMINARY ISSUE	11/17/2011



DETAIL A
OVERHANGING LIP
SCALE 1 / 5

NOTES

- 1) MANUFACTURED USING HIGH GRADE RESIN, COMBINED WITH CHOPPED STRAND AND WOVEN GLASS.
- 2) BUILT IN ACCORDANCE WITH ASTM D4097 STANDARDS.
- 3) AVAILABLE WITH ISOPHTHALIC AND UV PROTECTIVE GELCOATS.
- 4) CAPACITY: 5345 (L), 1412 (US GAL), 1176 (IMP GAL)
- 5) TYPE OF FITTING, SIZE AND LOCATION TO BE DETERMINED BY CUSTOMER.

PO #:		DRAWING TITLE:		DESIGNED BY:	
CUSTOMER:		SCALE: 1 / 25		DRAWN BY: J.M	
 DURA-TECH INDUSTRIAL & MARINE LIMITED 206 Ross Road Dartmouth, Nova Scotia B2Z 1B4 Telephone (902) 462-8265 Fax (902) 462-8235		DATE: 4/7/2011		REVIEWED BY:	
		REVISIONS:		APPROVED BY:	
DWG NO.: CT 8-4		PROJECT NO.:		SHEET NO.: 1 OF 1	