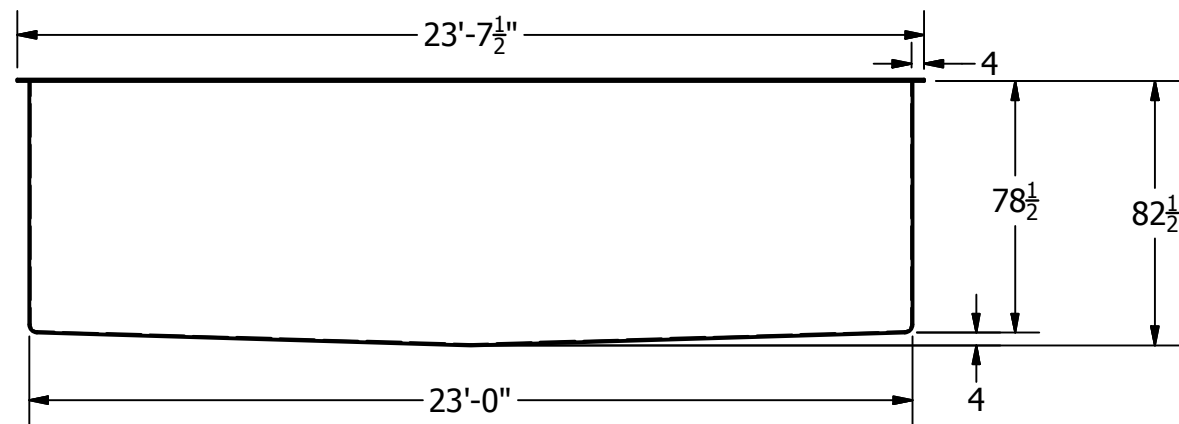
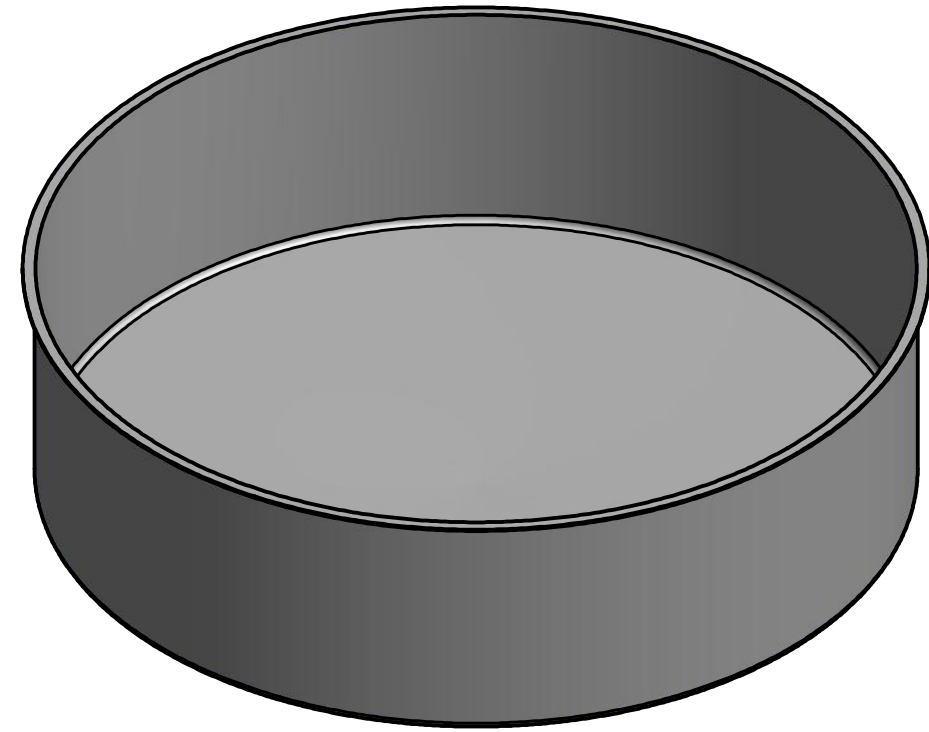
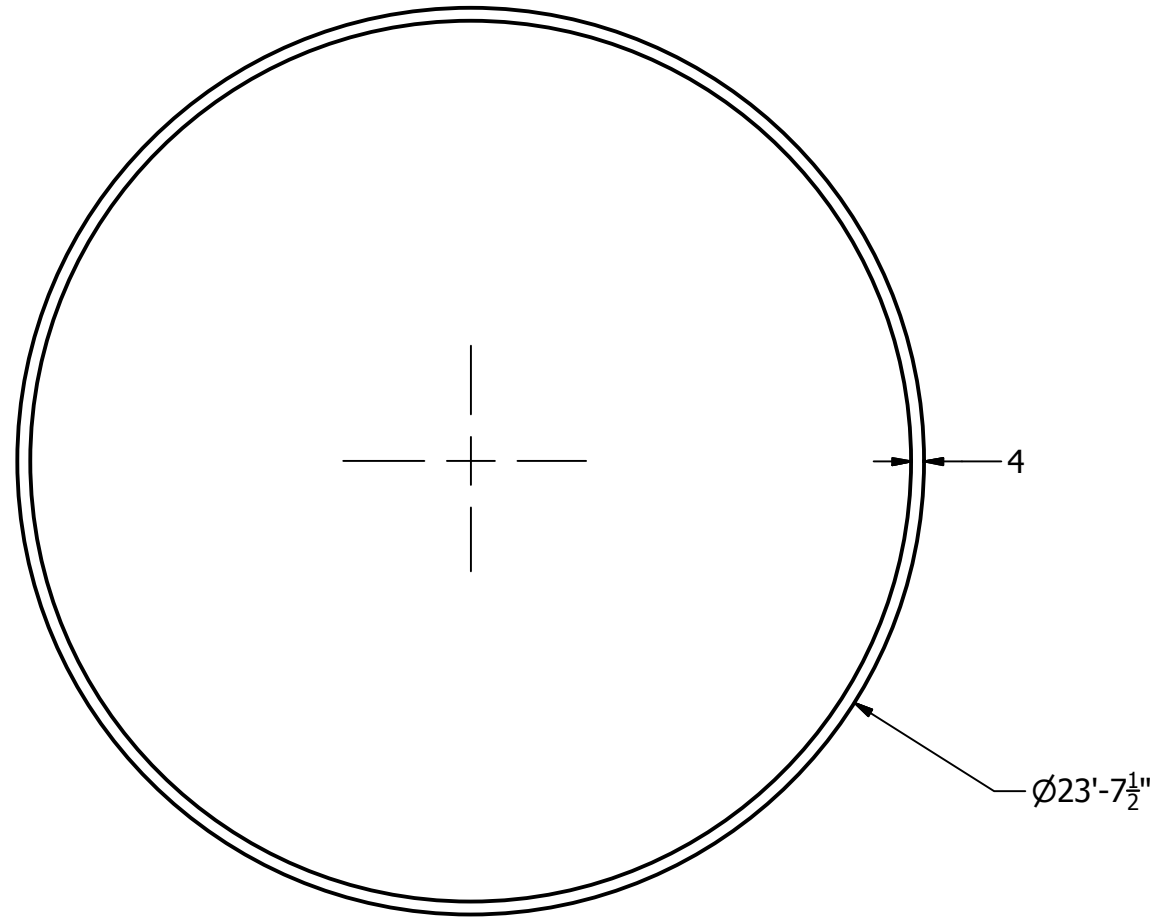



REVISION HISTORY			
REV	PART NUMBER	DESCRIPTION	DATE
00	CT 23-6	PRELIMINARY ISSUE	11/15/2011



NOTES

- 1) MANUFACTURED USING HIGH GRADE RESIN, COMBINED WITH CHOPPED STRAND AND WOVEN GLASS.
- 2) BUILT IN ACCORDANCE WITH ASTM D4097 STANDARDS.
- 3) AVAILABLE WITH ISOPHTHALIC AND UV PROTECTIVE GELCOATS.
- 4) CAPACITY: 81671 (L), 21575 (US GAL), 17965 (IMP GAL)
- 5) TYPE OF FITTING, SIZE AND LOCATION TO BE DETERMINED BY CUSTOMER.

PO #:		DRAWING TITLE:		DESIGNED BY:	
CUSTOMER:		SCALE: 1/60		DRAWN BY: J.M	
 DURA-TECH INDUSTRIAL & MARINE LIMITED 206 Ross Road Dartmouth, Nova Scotia B2Z 1B4 Telephone (902) 462-8265 Fax (902) 462-8235		DATE: 09/05/2011		REVIEWED BY:	
		REVISIONS:		APPROVED BY:	
DWG NO.: CT 23-6		PROJECT NO.:		SHEET NO.: 1 OF 1	

PRODUCED BY AN AUTODESK EDUCATIONAL PRODUCT

PRODUCED BY AN AUTODESK EDUCATIONAL PRODUCT